

## ADVANCED CUTTING

### How to “KISS-CUT”

Kiss cutting is the process of cutting through one layer of a stack of material and not cutting through the layer(s) below. Typically the upper layer(s) has a pressure sensitive backside which adheres to the lower layer of material.

Kiss cutting creates more scrap material for the upper layer(s), (compared to cutting individual layers and hand placing them on the lower layers) but can result in a considerable time savings since multiple layers do not need to be aligned and the placement stitch for the upper layer may be eliminated from the embroidery process.

### Prepare to Cut

1. Place bottom material layer onto adhesive sheet and smooth it flat. Place the foreground material on top of the background material making sure the sticky side is down.
2. Load blade holder into Carriage Jaw.
3. Adjust Blade Holder as described in the quick start guide, or the previous section. (Test with single button test cut.) Adjust blade exposure and cutting force so that only the material is cut. Weed the test cut, the bottom layer of twill should be scored lightly. If it cuts through both layers the blade is out too much.

**Note:** It is recommended that the materials are of similar type and thickness so the blade does not need readjustment.

4. Once blade is adjusted, use the keypad **Arrow** keys to position the Table and Carriage so that the Blade Holder is over the lower right corner of the material (lower left origin of plot file).
5. Press **Set Origin** on the Keypad to obtain a green keypad light.

### Send first cut file

1. Open the 301 software.
2. Select the directory and file you wish to open (See *Fig. 33*). Double click on the file or select the file and click on **Load Import File**.
3. Select **Design Setup**.
4. Under the Color Setup heading, select **K-C ALL** (Kiss Cut All). (See *Fig. 33*)
5. Under the **Color Setup** heading, select the color that corresponds to the “Top” layer of the design to be cut. This should be the profile with the smallest outline. (See *Fig. 33*)
6. Select **OK**.
7. Select **Send to Cutter**.
8. Select **OK**.

### Send second cut file

1. When the first cut is done, press the **Start/Stop** button (the light should turn “Red”) and move the tray forward. Weed away the excess material around the top letter.
2. Press **Start/Stop** button on the keypad, the light should turn back to green and the tray and head will move back to the original starting point.
3. Under the **Color Setup** heading, select the color that corresponds to the next layer of the design to be cut and deselect the color that was just cut. This profile should have a larger outline than the one previously cut.
4. Select **OK**.
5. Select **Send to Cutter**.
6. After it has finished cutting, weed away the excess material.

**Note:** As an alternative method, you can also cut the pieces in reverse order. For example, cut out the background piece(s) first, then lay the top piece of fabric on and cut those pieces out. This method allows you to 1) cut a whole tray of Kiss-Cuts, and weed the two pieces of fabric together, 2) No blade foot adjustment required for each layer, 3) Can be cut normal, or mirrored if all you have is twill with a paper backing.

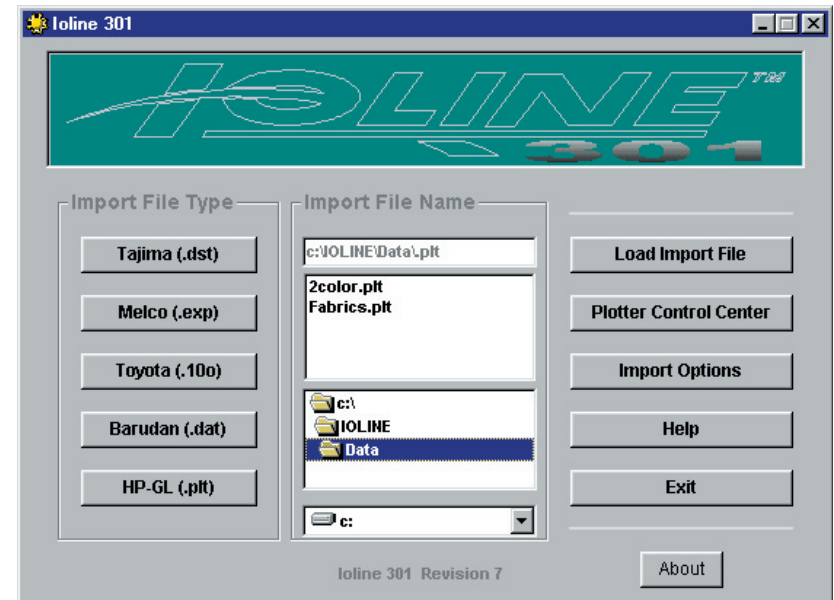


Fig. 32 - 301 “Main” Window