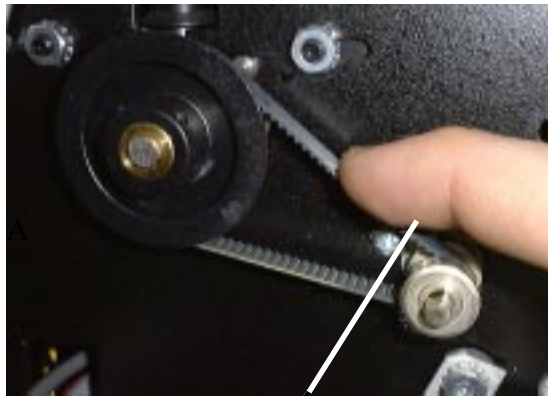


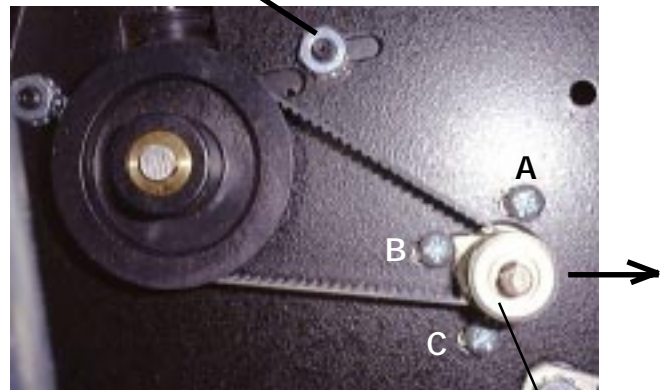


Table Belt
(Check to see if it's tight)

Table belt tightening nut



“X” axis timing belt



“X” axis belt tightening screws

- 1) Loosen screws A,B, & C
- 2) Push pulley D in direction of arrow.
- 3) Tighten screws A,B, & C while holding pulley D.

“Y” axis drive belt
Pull to see if it's tight
(Move the knife carriage to the right side of the machine).





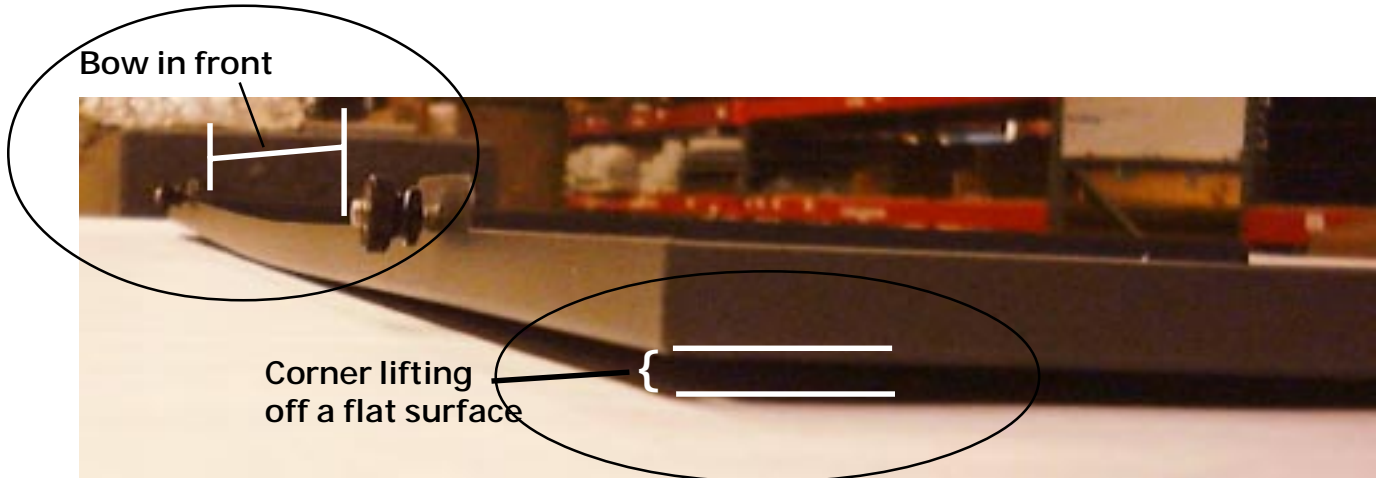
"Y" axis transmission



**Transmission belt
(Very loose)**

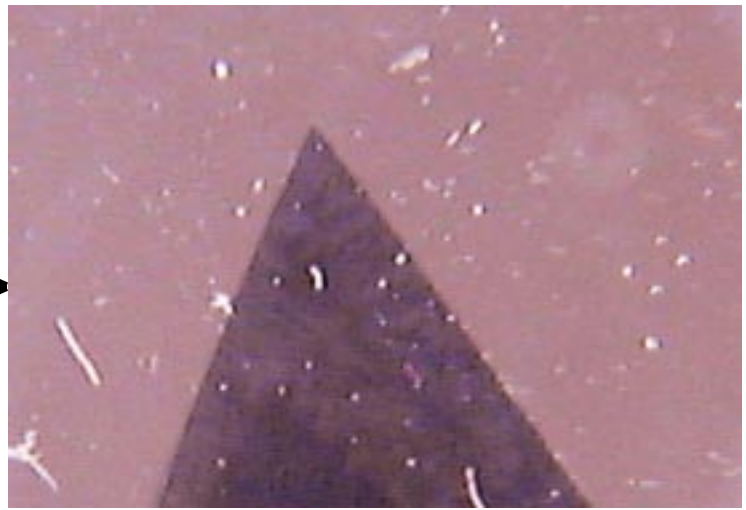
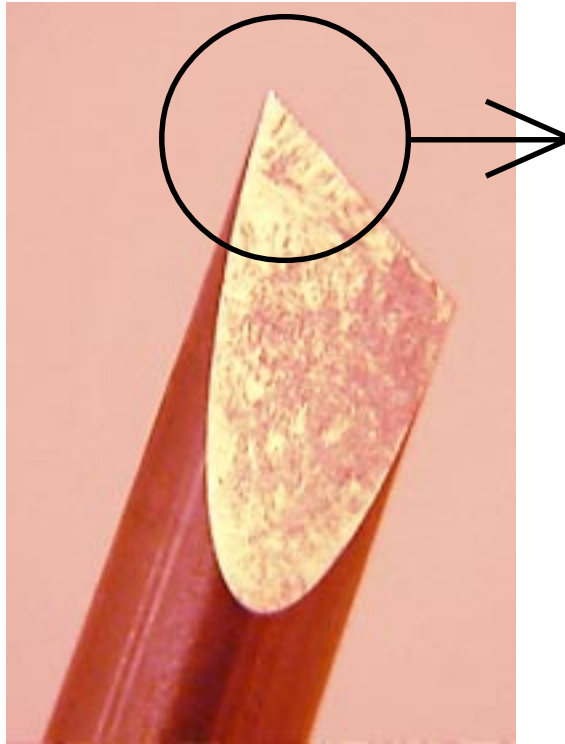


**Transmission belt
(The correct tension)**



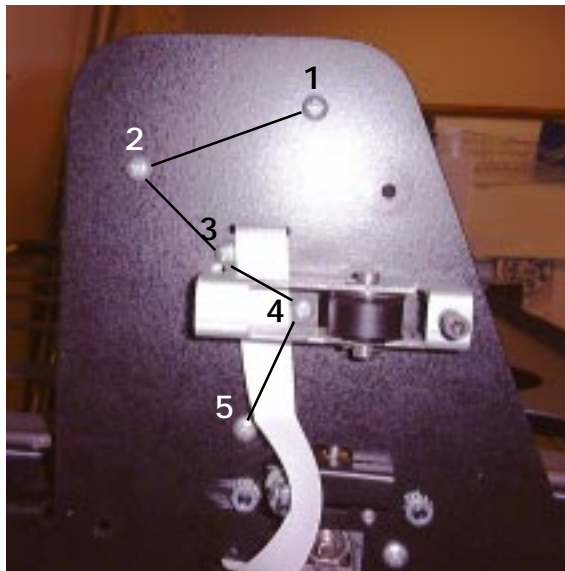
Bent Tray

Check on a flat surface. Look for the corners lifting up as shown in the photo. Also, look for a bow in the front or back of the tray.

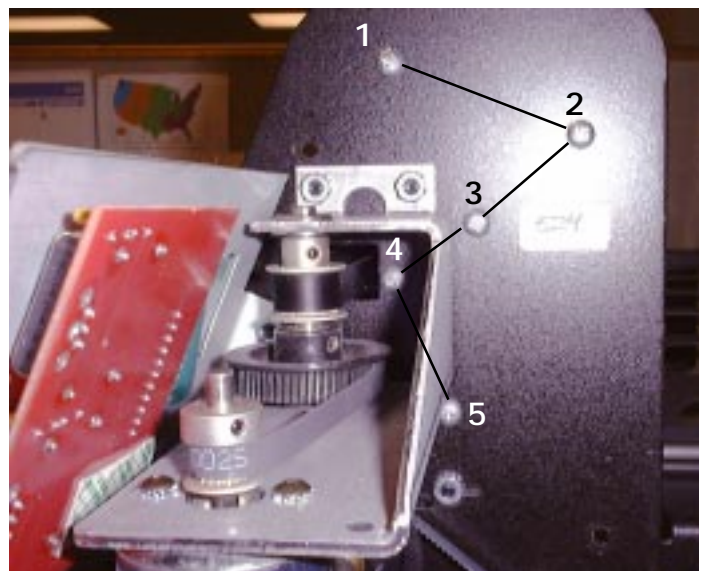


Blade

The tip should be sharp, and not dulled or rounded.



Left end plate



Right end plate

Lowering the traverse

- 1) Loosen the 5 screws shown on both end plates, and push down on the top cover.
- 2) Tighten the screws back up.