

Installing USB Drivers for Ioline Products



IMPORTANT NOTE: Ioline USB drivers create a special COM port that allows computer software with serial communication support to use the USB connection.

COMPATIBILITY: Ioline USB drivers are only compatible and tested with Microsoft Windows operating systems versions 2000, XP and Vista. They are not WHQL certified at this time.

PREPARE TO INSTALL



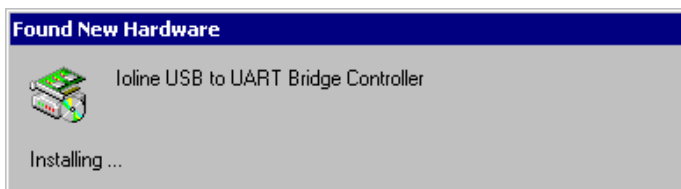
1. Make sure power to the Ioline equipment is off.
2. Connect the PC to the equipment with the USB cable.
3. Power on the PC.
4. Insert the included Ioline Installation CDROM into the PC CDROM drive.

WINDOWS XP WARNING

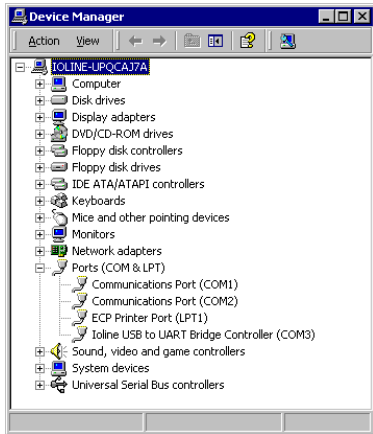


Important Note: A warning may appear during Windows XP installation that the driver is not certified by Microsoft. Please press the **Continue Anyway** button to continue with the installation.

INSTALL DRIVERS

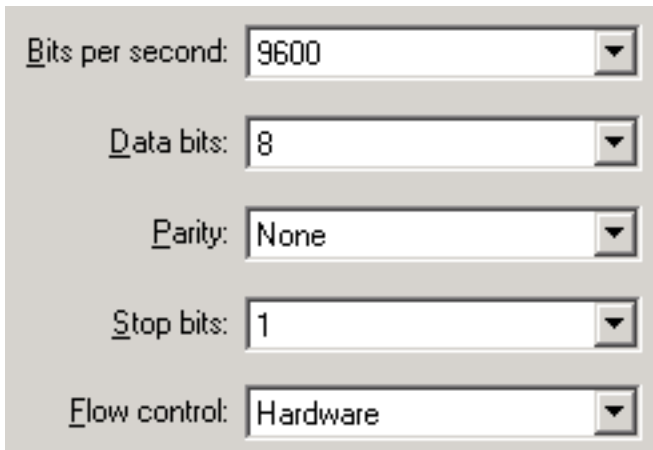


1. Turn on power to the Ioline equipment.
2. The Add New Hardware Wizard window will appear. Click on "Next."
3. Click in the circle next to "Search for a suitable driver for my device" then click "Next."
4. Click on Browse then find the *USB_Drivers* folder on the Ioline Installation CDROM then open the folder for your operating system (Windows 98Se or Windows 2000/XP). Click on "Open" then "OK"
5. A note will appear that the Wizard completed installing drivers for the **Ioline Composite Device**. Click the "Finish" button.
6. Some versions of Windows may repeat this process a second time for the **Ioline USB to UART Bridge Controller**. Click the "Finish" button.



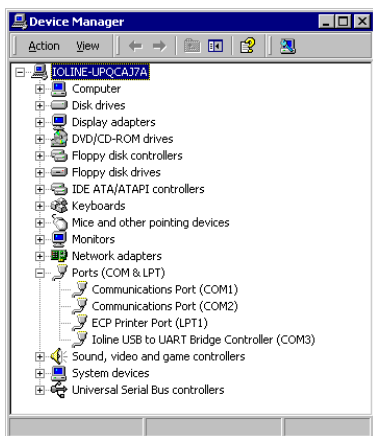
1. Open the Windows Control Panel.
2. Double click on the "System" icon.
3. In Windows 2000 and XP, click on the "Hardware" tab then "Device Manager" button. In Windows 98SE, click on the "Device Manager" tab.
4. Double click on the "Ports (COM and LPT)" item to expand the list.
5. Find the **Ioline USB to UART Bridge Controller (COMx)** item in the list. Write down the COM port number shown in the label. Use this information when configuring software that communicates with the equipment (see below).

SETUP THE SOFTWARE TO USE USB



1. Install the application(s) that will send data to the machine. This includes utilities that are included with the equipment.
2. When configuring the driver and communications for the application, choose the COM port number determined above in *Find the COM Port*.
3. If additional COM port settings are required, use the values shown in the figure to the left.

MANUALLY CONFIGURE THE USB SETTINGS (OPTIONAL)



Important Note: Manually changing the Windows COM port settings is required for some programs. Use the Windows Device Manager to change settings as shown below.

1. Open the Windows Control Panel.
2. Double click on the "System" icon.
3. In Windows 2000 and XP, click on the "Hardware" tab then "Device Manager" button. In Windows 98SE, click on the "Device Manager" tab.
4. Double click on the "Ports (COM and LPT)" item to expand the list.
5. Right click on the **Ioline USB to UART Bridge Controller (COMx)** item in the list then choose **Properties**.
6. Click on the **Port Settings** tab and enter the values shown above in *Setup The Software to Use USB*.
7. Click on **OK** when finished.

Ioline Customer Service Department
Monday through Friday
7:00 A.M. - 5:00 P.M. U.S. Pacific Time
Voice: (425) 398-8282
Fax: (425) 398-8383
techsupport@ioline.com
www.ioline.com