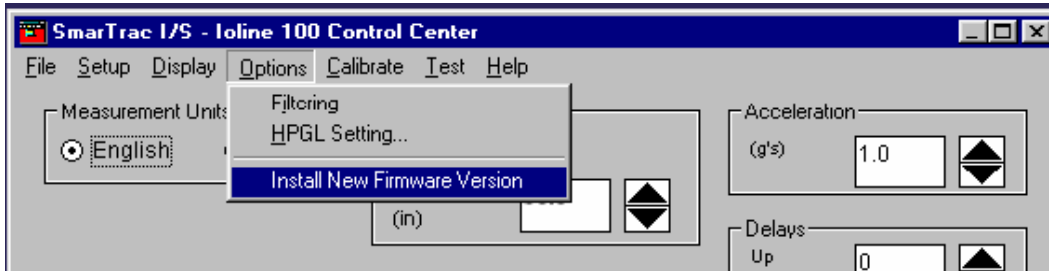
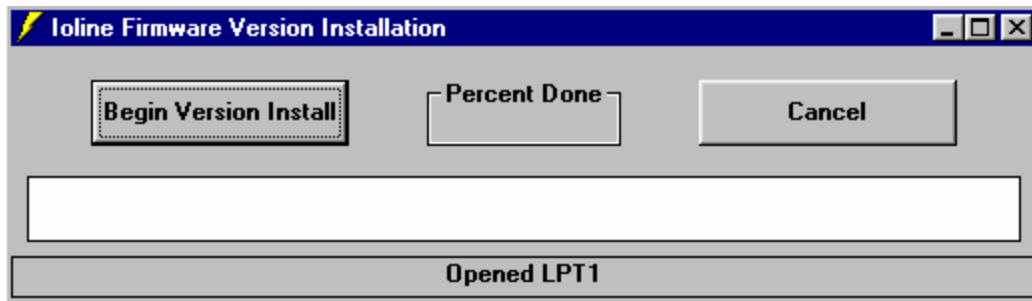


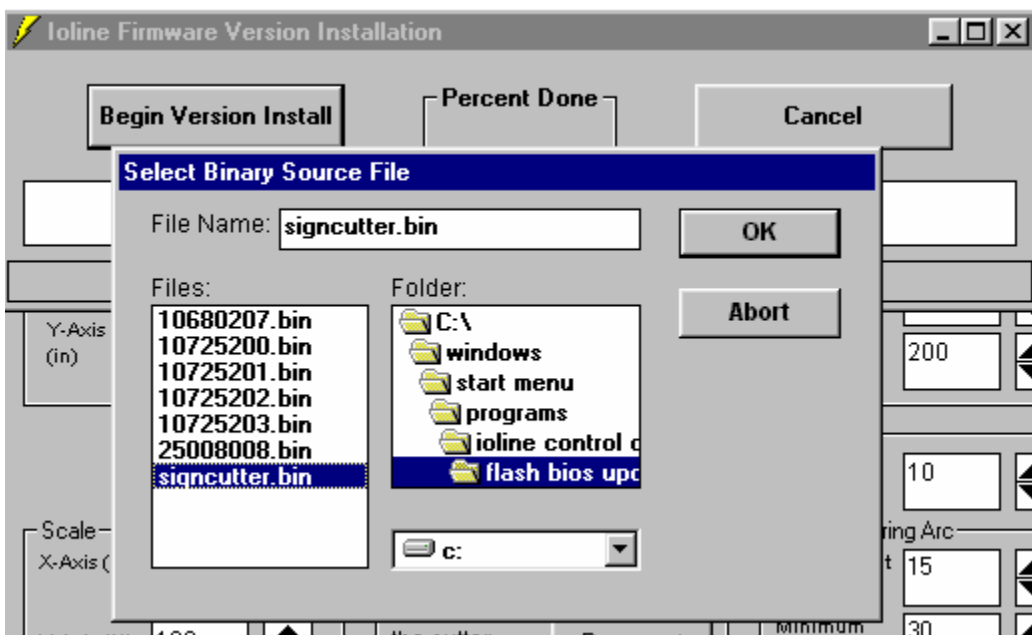
1. Save the .bin file to Windows desktop or a temp directory.
2. Turn on your plotter.
3. Press Set Origin on the keypad to place the plotter online.
4. Open the Ioline Control Center.
5. From the menu select Options, Install New Firmware Version.



6. Click on Begin Version Install.



7. The control center will ask for the file path.



8. Once the file path is set, the plotter will beep and installation will begin.
9. At the end of the process the plotter will re-initialize. The keypad LED will turn red when the process is complete.
10. Turn off the power switch.
11. Hold down the up arrow key on the keypad while turning on the power switch to reset the machine. When the carriage starts to move, release the up arrow key. The carriage should move all the way to the left, and then rapidly back to the right. Then the red light should illuminate.
12. Firmware installation complete.