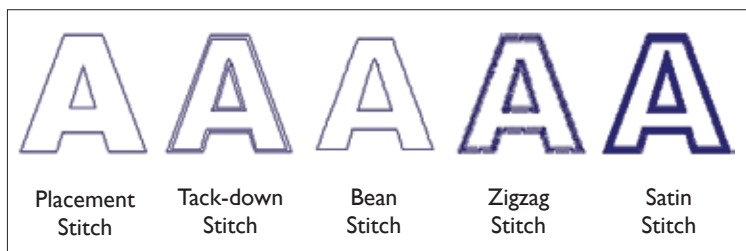


Stitch enhancements

Bean Stitch

- A new, decorative stitch so called because it resembles tiny beans. With its thicker appearance, the Bean stitch offers an alternative to the standard **Placement** stitch for outlines. It's frequently used for fashion designs using scrim felt on sweat shirts.



- The **Bean** stitch is a running stitch made with 3 or 5 stitches placed back and forth between two points. It creates a thicker line than the placement stitch. Often used for outlining because it eliminates the need for repeatedly digitizing a single-ply running stitch outline. Primarily used for outlining larger designs.
- When supply of a favorite thread color is scarce, the **Bean** stitch can also be employed to provide the illusion of a thicker filament.

Stitch quality

- Improved stitch fragmentation for **Placement** and **Tack-down** stitching now eliminates extra-small stitches, which can cause thread breakage.
- Improvements to **Zigzag** column stitch assure a more consistent overlap of the **Placement (Outline)** stitch.
- In the **Create Stitches Window**, set **Convert outline to embroidery resolution** to **ON** for more accurate alignment (overlap between **Column** stitch and **Placement** stitch overlap).
- New minimum and maximum stitch length settings offer greater control over **Placement**, **Tack-down** and **Bean** stitches.
- In **Create Stitches**, a new selection called **Eliminate Protruding Stitches** minimizes protruding stitches on **Zigzag** stitching.



**Summary
of new features**

Editing

- **Edit Design** now includes the **Double** function that quickly fragments a highlighted segment into two.
- Duplicate polygons occasionally appear as the result of design software bugs or operator error. A new check box was added to the Create Stitches Window to quickly clean up the design and improve stitch output. When **Eliminate duplicate polygons** is **ON**, 301 deletes duplicate polygons (e.g. those with the exact same shape and segment count).

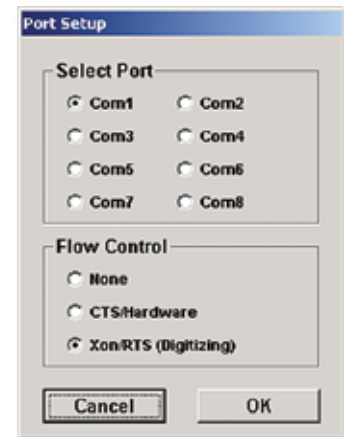
Import

- Enhanced .DXF import filter now supports Adobe Illustrator shapes (ARC, CIRCLE, ELLIPSE, etc.).

Communications

USB port

- USB support has been added within 301 Software for later generation 300 and 350HF Systems with USB ports.
- USB driver functionality is now available for COM ports 5 – 8.



Productivity Enhancements

Time / motion enhancement

- Check *Send to Cutter: Move tray forward* to move the tray all the way forward at the end of cutting. Useful for a production environment, especially when multiple cutting trays are used.

Edit functions

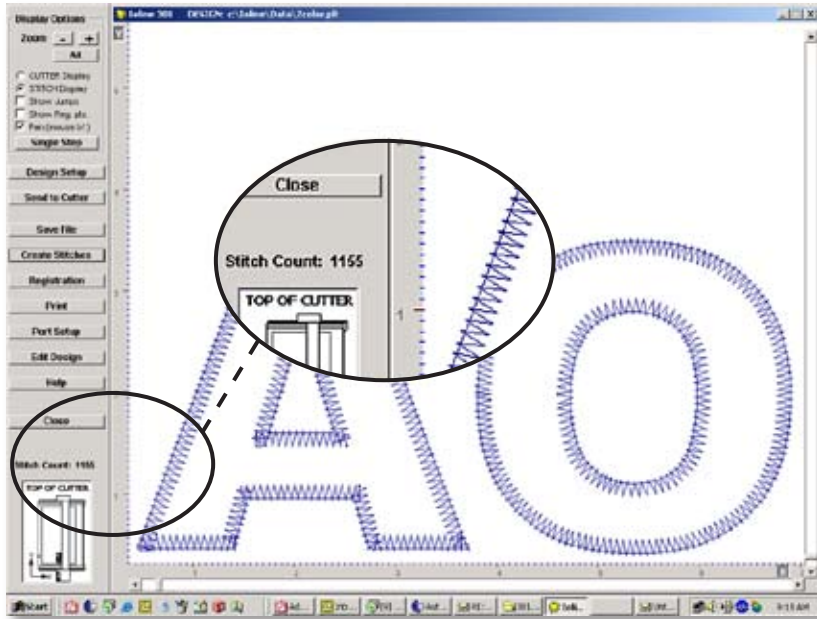
- **Pan** function now centers around the cursor more predictably.

Design Setup

- By default, layers are named with numbers (e.g. layer 0, layer1, etc.), but users can now change layer (color) names after a design is imported.

Stitch Estimator

- 301 displays the stitch count in the lower left corner of the window to aid in estimating the rough cost and/or time required to complete a stitch-out.

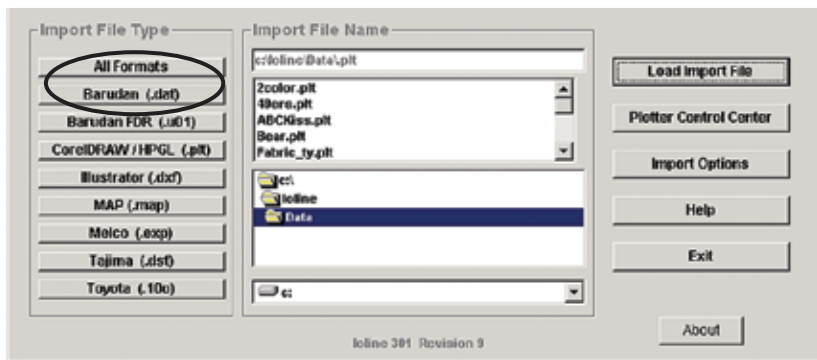


Automatic trimming

- 301 Software now supports embroidery machine software programs that require more than 3 consecutive **Jump** stitches before triggering automatic trimmers. If **Trim 5** is selected, each jump that exceeds the user-specified **Trim-jump, minimum** will be fragmented into 5 consecutive **Jump** stitches. The default setting is **Trim 3**.

File format display

- An **All Formats** button in the 301 opening window displays any importable file.
- Files imported from Adobe® Illustrator® (.DXF) and CorelDRAW!® (.PLT) now accurately reflect the program from which they were exported. The previous version of 301 Software labeled these files with AutoCAD® and HPGL respectively.



High-speed Single Step

- Reduces the time that it takes to 'walk through' a design (e.g. virtually review stitching order on-screen) before embroidering a design.

Other

- The **Create Stitches** and **Design Setup** form now feature a **Help** button.
- Users who do not have permission to save files on their local area network (LAN), can now store temporary files in memory rather than on a network drive. Simply turn **Save Memory OFF** on the **Send to Cutter** form. The file **Temp1.plt** will be saved to memory rather than to the default folder, *c:\Ioline*.

